

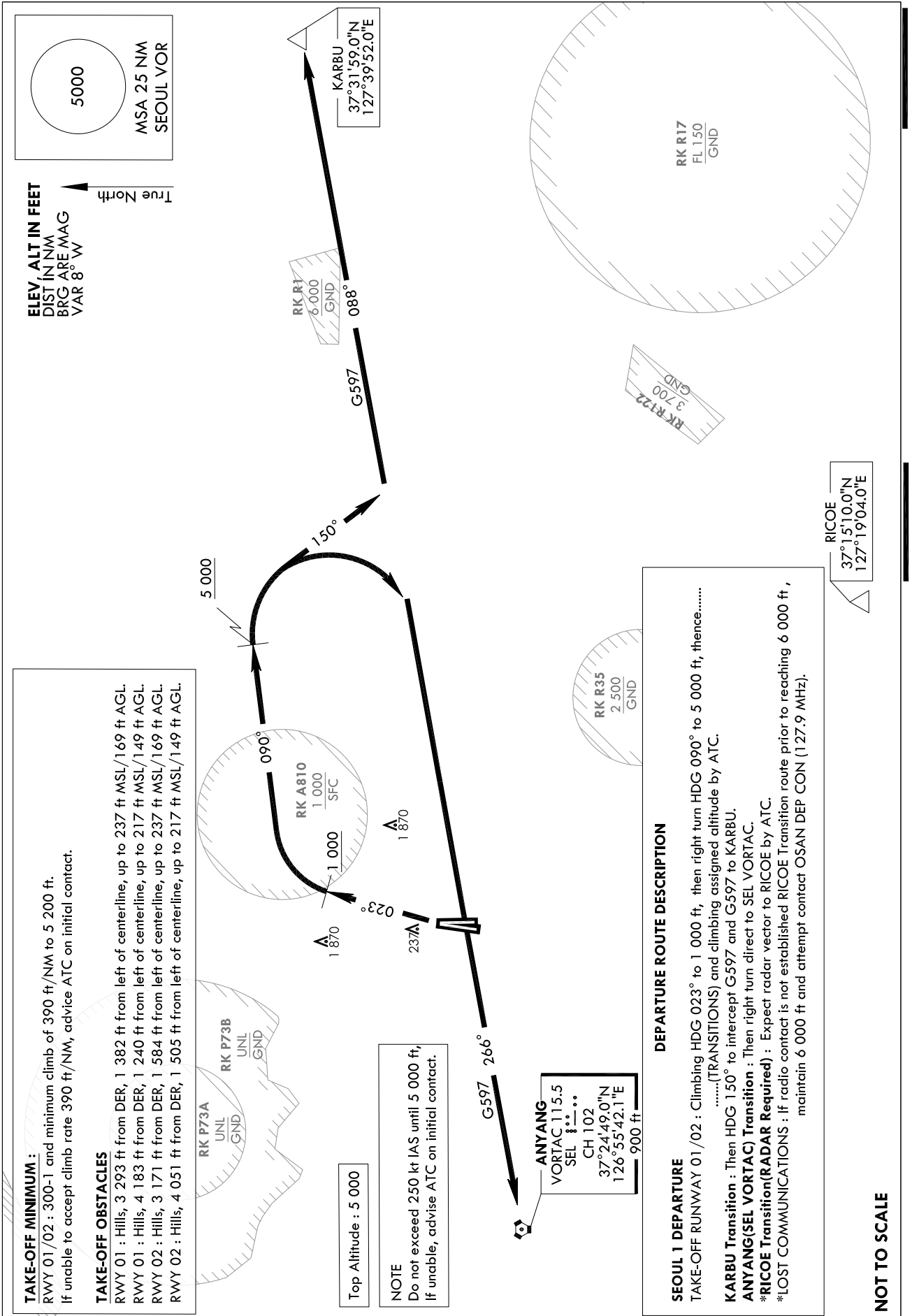
STANDARD DEPARTURE
CHART - INSTRUMENT(SID)

TRANSITION ALT 14 000
TRANSITION LVL FL 140

SEOUL DEP 123.8 363.8
SEOUL TWR 126.2 234.5 236.6

SEOUL/Seoul (RKSM)
RWY 01/02
SEOUL 1

Note : Departure under U.S. TERPS.



TAKE-OFF MINIMUM :

RWY 01/02 : 300-1 and minimum climb of 390 ft/NM to 5 200 ft.
If unable to accept climb rate 390 ft/NM, advise ATC on initial contact.

TAKE-OFF OBSTACLES

RWY 01 : Hills, 3 293 ft from DER, 1 382 ft from left of centerline, up to 237 ft MSL/169 ft AGL.
RWY 01 : Hills, 4 183 ft from DER, 1 240 ft from left of centerline, up to 217 ft MSL/149 ft AGL.
RWY 02 : Hills, 3 171 ft from DER, 1 584 ft from left of centerline, up to 237 ft MSL/169 ft AGL.
RWY 02 : Hills, 4 051 ft from DER, 1 505 ft from left of centerline, up to 217 ft MSL/149 ft AGL.

Top Altitude : 5 000

NOTE

Do not exceed 250 kt IAS until 5 000 ft,
If unable, advise ATC on initial contact.

DEPARTURE ROUTE DESCRIPTION

SEOUL 1 DEPARTURE
TAKE-OFF RUNWAY 01/02 : Climbing HDG 023° to 1 000 ft, then right turn HDG 090° to 5 000 ft, thence.....
.....(TRANSITIONS) and climbing assigned altitude by ATC.
KARBU Transition : Then HDG 150° to intercept G597 and G597 to KARBU.
ANYANG(SEL VORTAC) Transition : Then right turn direct to SEL VORTAC.
***RICOE Transition(RADAR Required) :** Expect radar vector to RICOE by ATC.
***LOST COMMUNICATIONS :** If radio contact is not established RICOE Transition route prior to reaching 6 000 ft, maintain 6 000 ft and attempt contact OSAN DEP CON (127.9 MHz).

NOT TO SCALE

INTENTIONALLY

LEFT

BLANK

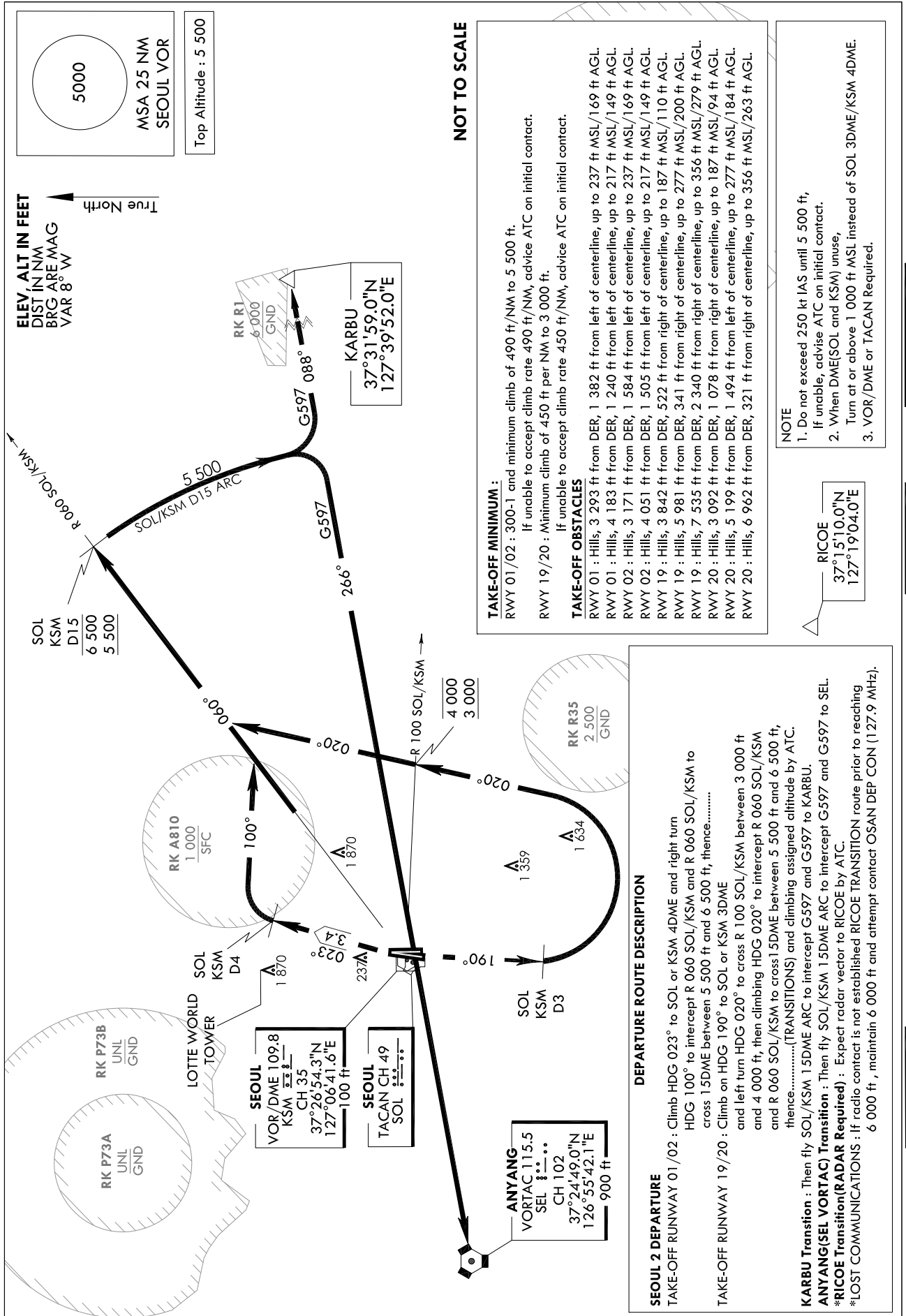
STANDARD DEPARTURE
CHART - INSTRUMENT(SID)

TRANSITION ALT 14 000
TRANSITION LVL FL 140

SEOUL DEP 123.8 363.8
SEOUL TWR 126.2 234.5 236.6

SEOUL/Seoul (RKSM)
RWY 01/02, RWY 19/20
SEOUL 2

Note : Departure under U.S. TERPS.



Change : Amended coordinate format.

INTENTIONALLY

LEFT

BLANK

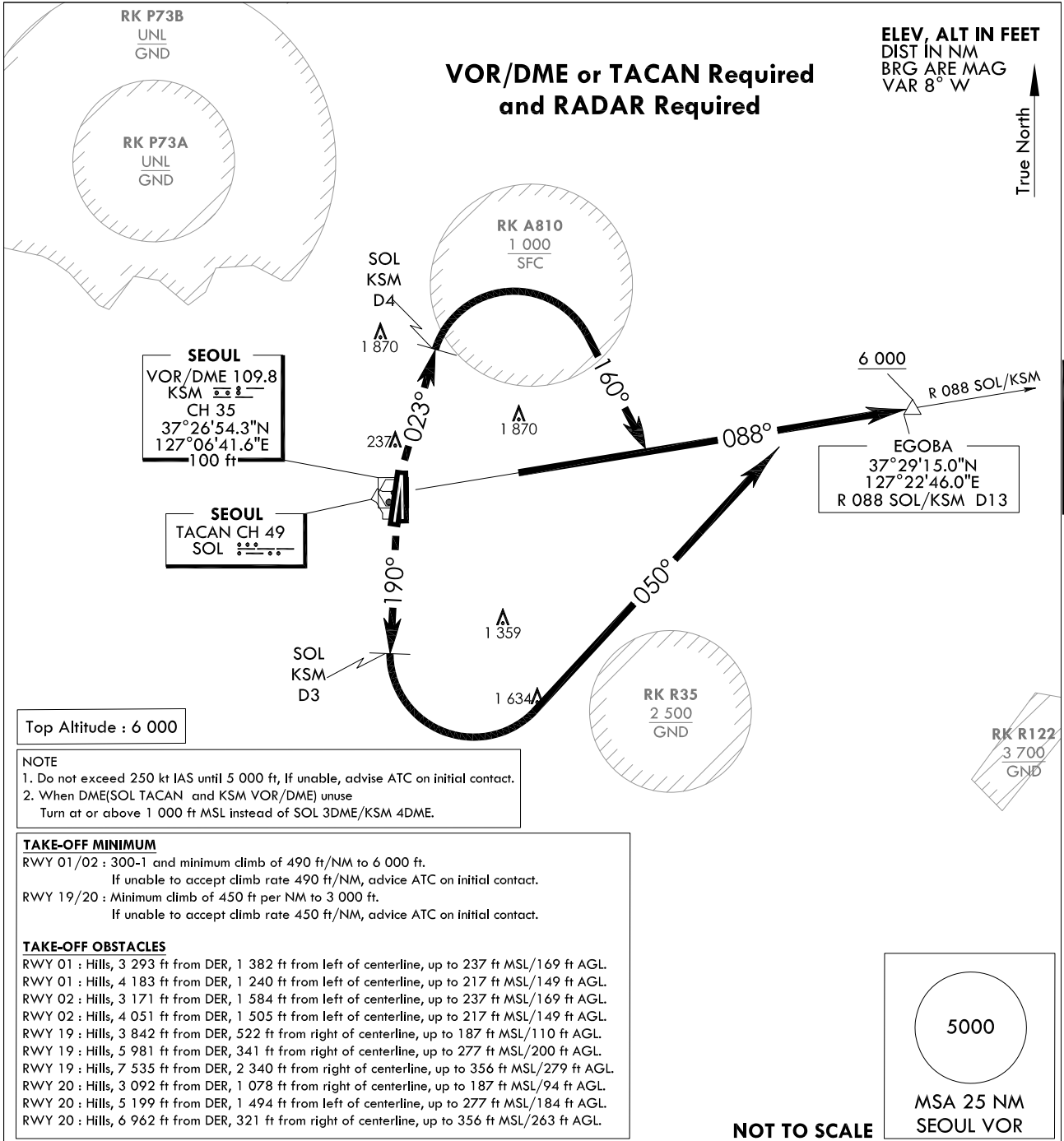
**STANDARD DEPARTURE
CHART - INSTRUMENT(SID)**

TRANSITION ALT 14 000
TRANSITION LVL FL 140

SEOUL DEP 123.8 363.8
SEOUL TWR 126.2 234.5 236.6

**SEOUL/Seoul (RKSM)
RWY 01/02, RWY 19/20
EGOBA 5**

Note : Departure under U.S. TERPS.



DEPARTURE ROUTE DESCRIPTION

EGOBA 5 DEPARTURE

TAKE-OFF RUNWAY 01/02 : Climb HDG 023° to SOL or KSM 4DME
and climbing right turn HDG 160° to intercept R 088 SOL/KSM and
R 088 SOL/KSM to cross EGOBA at or above 6 000 ft.

TAKE-OFF RUNWAY 19/20 : Climb HDG 190° to SOL or KSM 3DME
and climbing left turn HDG 050° to intercept R 088 SOL/KSM and
R 088 SOL/KSM to cross EGOBA at or above 6 000 ft.

Change : Amended coordinate format.

INTENTIONALLY

LEFT

BLANK

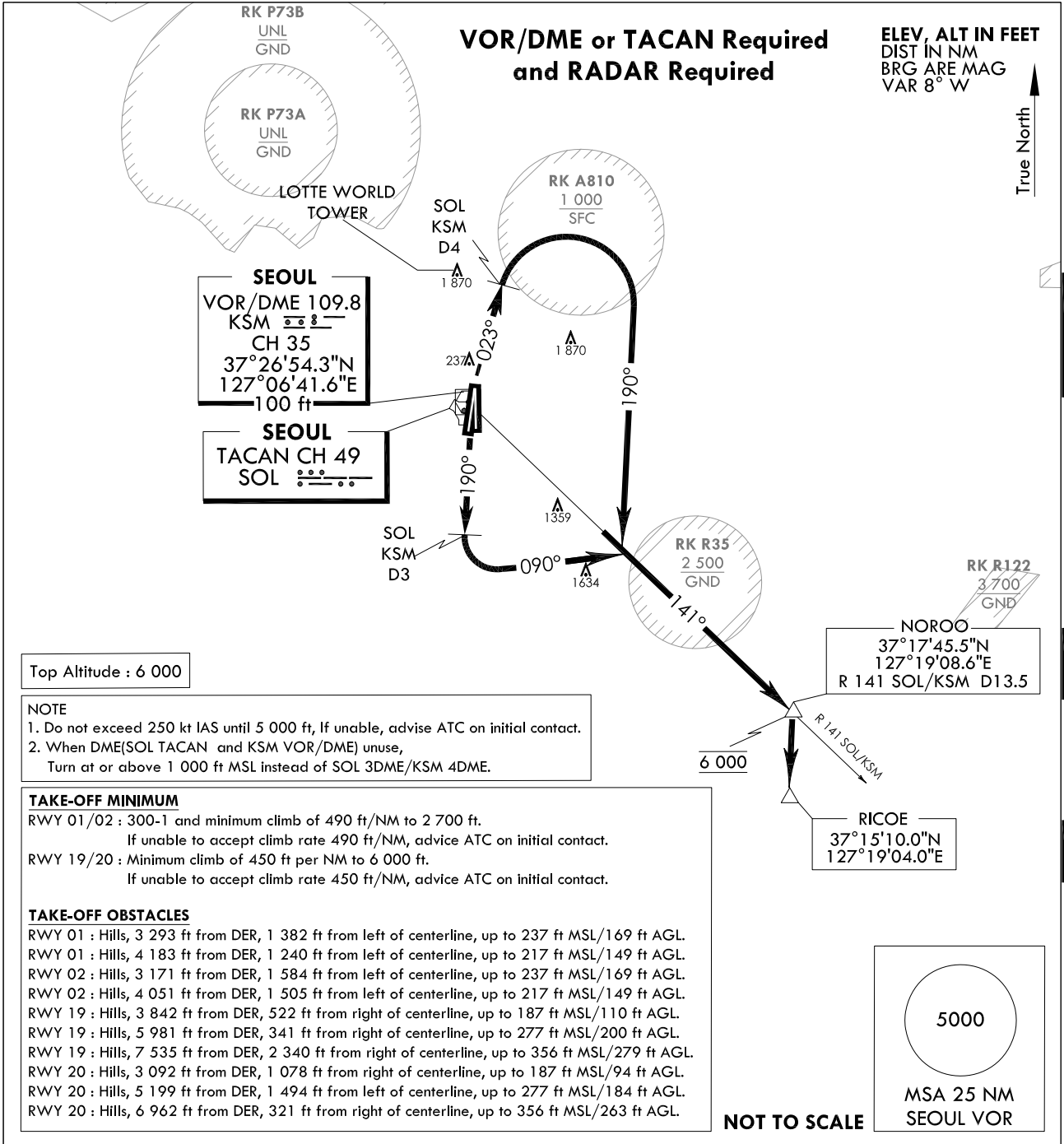
STANDARD DEPARTURE
CHART - INSTRUMENT(SID)

TRANSITION ALT 14 000
TRANSITION LVL FL 140

SEOUL DEP 123.8 363.8
SEOUL TWR 126.2 234.5 236.6

SEOUL/Seoul (RKSM)
RWY 01/02, RWY 19/20
RICOE 5

Note : Departure under U.S. TERPS.



DEPARTURE ROUTE DESCRIPTION

RICOE 5 DEPARTURE

TAKE-OFF RUNWAY 01/02 : Climb HDG 023° to SOL or KSM 4DME and climbing right turn HDG 190° to intercept R 141 SOL/KSM and R 141 SOL/KSM to cross NOROO at 6 000 ft, then expect radar vector to RICOE or filed En-route fix by ATC.

TAKE-OFF RUNWAY 19/20 : Climb HDG 190° to SOL or KSM 3DME and climbing left turn HDG 090° to intercept R 141 SOL/KSM and R 141 SOL/KSM to cross NOROO at 6 000 ft, then expect radar vector to RICOE or filed En-route fix by ATC.

Change : Amended coordinate format.

INTENTIONALLY

LEFT

BLANK

**STANDARD DEPARTURE CHART
INSTRUMENT (SID)**

TRANSITION ALT 14 000
TRANSITION LVL FL 140

SEOUL DEP 123.8 363.8
SEOUL TWR 126.2
236.6 234.5

**SEOUL/Seoul (RKSM)
RWY 01/02
RNAV MEESA 1**

Note : Departure under U.S TERPS.

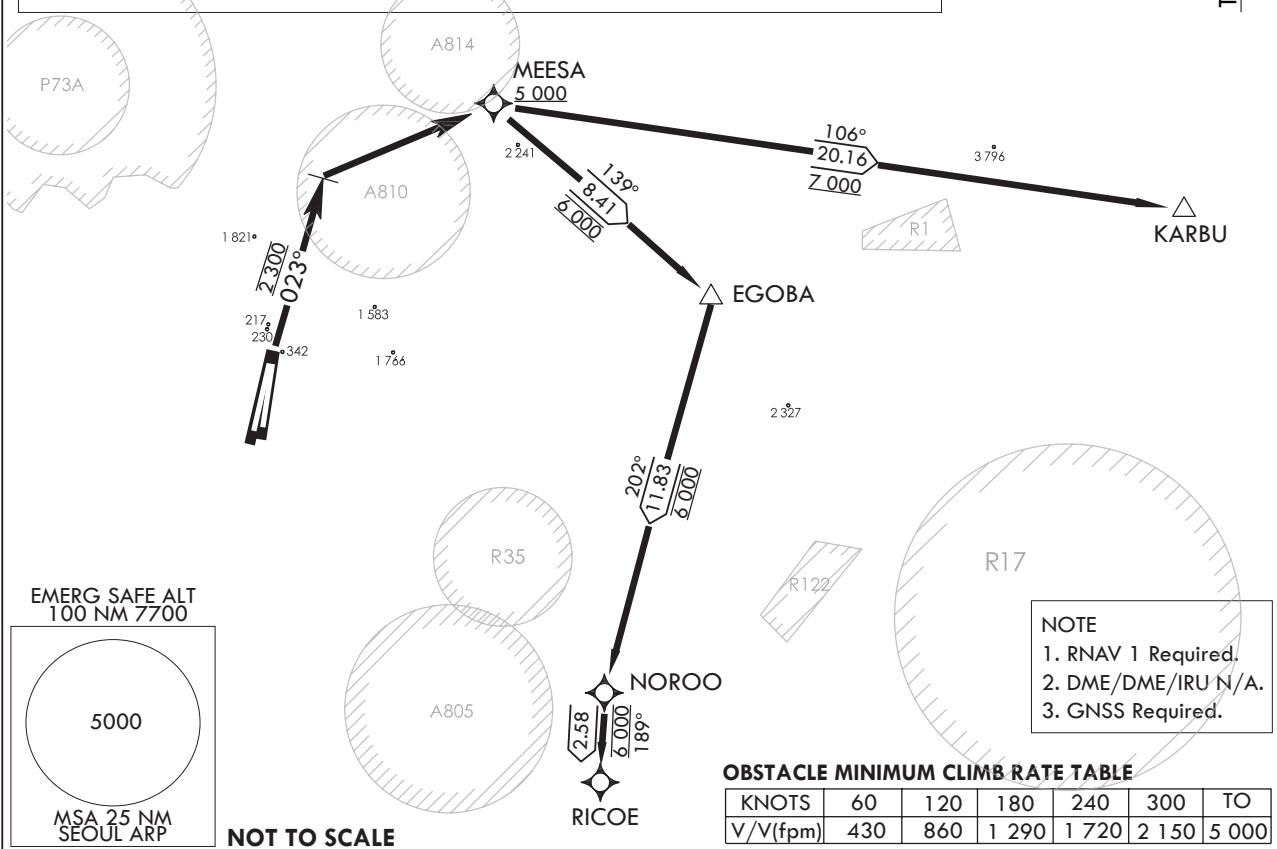
TAKE-OFF OBSTACLE :

RWY 01 : Hills, 3 321 ft from DER, 1 411 ft from left of centerline,
up to 230 ft AMSL/161 ft AGL.
RWY 01 : Terrain, 1 964 ft from right of RWY 01 centerline, up to 342 ft AMSL/273 ft AGL.
RWY 02 : Terrain, 2 181 ft from right of RWY 02 centerline, up to 342 ft AMSL/250 ft AGL.

TAKE-OFF MINIMUM :

RWY 01/02 : 300-1 and minimum climb of 430 ft/NM to 5 000 ft.

**ELEV, ALT IN FEET
DIST IN NM
BRG ARE MAG
VAR 8°W**



DEPARTURE PROCEDURE DESCRIPTION

RNAV MEESA 1 DEPARTURE

TAKE-OFF RUNWAY 01/02 : Climb on HDG 023° to 2 300 ft, then right turn direct MEESA,
cross MEESA at or above 5 000 ft, thence.....
.....(transition) maintain 6 000 ft, expect filed altitude 10 minutes after departure.

KARBU TRANSITION : Track 106 to KARBU and climb to assigned altitude.

EGOBA TRANSITION : Track 139 to EGOBA and climb to assigned altitude.

RICOE TRANSITION : Track 139 to EGOBA and Track 202 to NOROO and Track 189 to RICOE
and climb to assigned altitude.

SEOUL/Seoul (RKSM)
RWY 01/02
RNAV MEESA 1

AERONAUTICAL DATA TABULATION

Standard Instrument Departure Procedure Coding Tables

RNAV MEESA 1

Serial Number	Path Descriptor	Waypoint Identifier	Fly -Over	Course/Track ° M(° T)	Distance (NM)	Turn Direction	Altitude (ft)	Speed (kt)	Coordinates	VPA /TCH	Navigation specification	Remarks
001	VA	-	-	Heading 023°	-	-	@2 300	-250	-	-	RNAV1	
002	DF	MEESA	-	-	-	R	+5 000	-250	37°34'43.9"N 127°14'44.8"E	-	RNAV1	

Feeder Routes

Serial Number	Path Descriptor	Waypoint Identifier	Fly -Over	Course/Track ° M(° T)	Distance (NM)	Turn Direction	Altitude (ft)	Speed (kt)	Coordinates	VPA /TCH	Navigation specification	Remarks
001	DF	MEESA	-	-	-	-	+5 000	-	37°34'43.9"N 127°14'44.8"E	-	RNAV1	
002	TF	KARBU	-	106°/98°	20.16	R	+7 000	-	37°31'59.0"N 127°39'52.0"E	-	-	

Feeder Routes

Serial Number	Path Descriptor	Waypoint Identifier	Fly -Over	Course/Track ° M(° T)	Distance (NM)	Turn Direction	Altitude (ft)	Speed (kt)	Coordinates	VPA /TCH	Navigation specification	Remarks
001	DF	MEESA	-	-	-	-	+5 000	-250	37°34'43.9"N 127°14'44.8"E	-	RNAV1	
002	TF	EGOBA	-	139°/131°	8.41	R	@6 000	-	37°29'15.0"N 127°22'46.0"E	-	RNAV1	
003	TF	NOROO	-	202°/194°	11.83	R	@6 000	-	37°17'45.5"N 127°19'08.6"E	-	RNAV1	
004	TF	RICOE	-	189°/181°	2.58	L	@6 000	-	37°15'10.0"N 127°19'04.0"E	-	RNAV1	

Change : Amended coordinate format.

**STANDARD DEPARTURE CHART
INSTRUMENT (SID)**

TRANSITION ALT 14 000
TRANSITION LVL FL 140

SEOUL	DEP	123.8	363.8
SEOUL	TWR	126.2	
		236.6	234.5

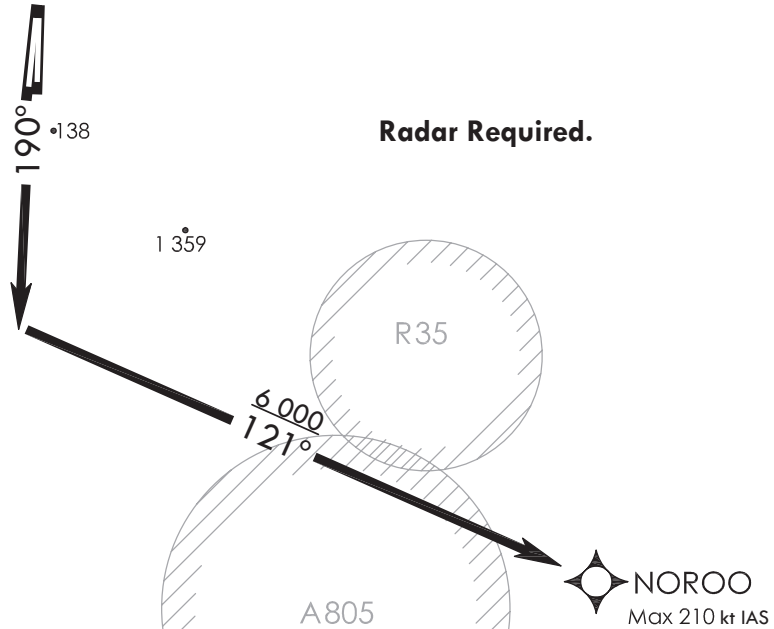
SEOUL/Seoul (RKSM)
RWY 19/20
RNAV NOROO 1

Note : Departure under U.S TERPS.

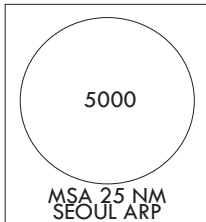
OBSTACLE MINIMUM CLIMB RATE TABLE

KNOTS	60	120	180	240	300	TO
V/V(fpm)	430	860	1 290	1 720	2 150	5 000

ELEV, ALT IN FEET
DIST IN NM
BRG ARE MAG
VAR 8°W



EMERG SAFE ALT
100 NM 7700



NOT TO SCALE

TAKE-OFF MINIMUM :

RWY 19/20 : Standard with minimum climb of 500 ft/NM to 3 000.

NOTE

1. RNAV 1 Required.
2. DME/DME/IRU N/A.
3. GNSS Required.
4. If unable to accept climb rate, advise ATC on initial contact.
5. Limit NOROO to maximum 210 kt IAS, if unable advise ATC on initial contact.

DEPARTURE PROCEDURE DESCRIPTION

RNAV NOROO 1 DEPARTURE

TAKE-OFF RUNWAY 19/20 : Climb HDG 190° to intercept course 121 to NOROO and climb to 6 000 ft, hence climb on assigned heading for radar vector.

SEOUL/Seoul (RKSM)
 RWY 19/20
 RNAV NOROO 1

AERONAUTICAL DATA TABULATION

Standard Instrument Departure Procedure Coding Tables

RNAV NOROO 1

Serial Number	Path Descriptor	Waypoint Identifier	Fly -Over	Course/Track ° M(° T)	Distance (NM)	Turn Direction	Altitude (ft)	Speed (kt)	Coordinates	VPA /TCH	Navigation specification	Remarks
001	VI	-	-	Heading 190°	-	-	-	-210	-	-	RNAV1	Bank angle 20°
002	CF	NOROO	-	121°/113°	-	L	+6 000	-210	37°17'45.5"N 127°19'08.6"E	-	RNAV1	Bank angle 20°

Change : Amended coordinate format.

**STANDARD DEPARTURE CHART
INSTRUMENT (SID)**

TRANSITION ALT 14 000
TRANSITION LVL FL 140

SEOUL DEP 123.8 363.8
SEOUL TWR 126.2
236.6 234.5

**SEOUL/Seoul (RKSM)
RWY 19/20
RNAV SONGTAN 1**

Note : Departure under U.S TERPS.

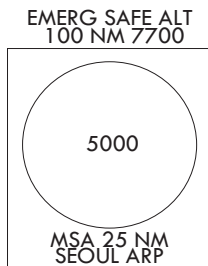
OBSTACLE MINIMUM CLIMB RATE TABLE

KNOTS	60	120	180	240	300	TO
V/V(fpm)	500	1 000	1 500	2 000	2 500	5 000

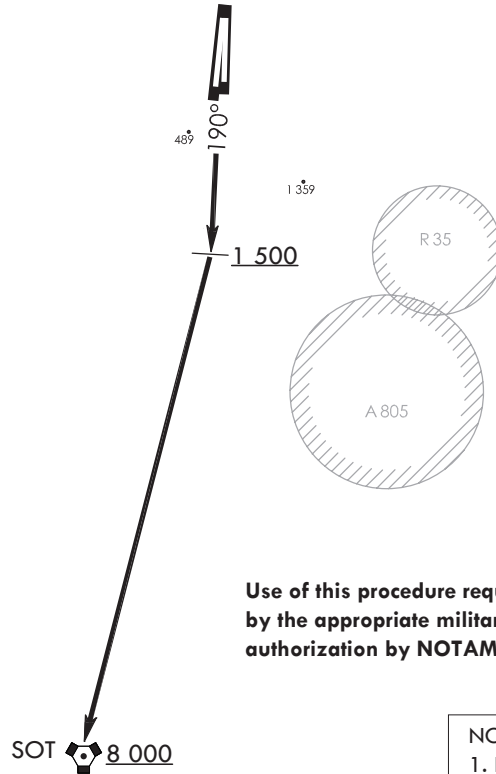
TAKE-OFF MINIMUM :

RWY 19/20 : 500-1¼ with minimum climb of 500 ft/NM to 5 000.

**ELEV, ALT IN FEET
DIST IN NM
BRG ARE MAG
VAR 8°W**



NOT TO SCALE



**Use of this procedure require specific authorization
by the appropriate military authority and
authorization by NOTAM about airspace control.**

NOTE

1. RNAV 1 Required.
2. DME/DME/IRU N/A.
3. GNSS Required.
4. If unable to accept climb rate, advise ATC on initial contact.

DEPARTURE PROCEDURE DESCRIPTION

RNAV SONGTAN 1 DEPARTURE

TAKE-OFF RUNWAY 19/20 : Climb HDG 190° to 1 500 ft, then right turn direct SOT(SONGTAN VORTAC) and climb assigned altitude.

SEOUL/Seoul (RKSM)
RWY 19/20
RNAV SONGTAN 1

AERONAUTICAL DATA TABULATION

Standard Instrument Departure Procedure Coding Tables

RNAV SONGTAN 1

Serial Number	Path Descriptor	Waypoint Identifier	Fly-Over	Course/Track ° M(° T)	Distance (NM)	Turn Direction	Altitude (ft)	Speed (kt)	Coordinates	VPA /TCH	Navigation specification	Remarks
001	VA	-	-	Heading 190°	-	-	+1 500	-	-	-	RNAV1	ICA
002	CF	SOT	-	-	-	R	+8 000	-	37°05'39.7"N 127°01'54.0"E	-	RNAV1	

Change : Amended coordinate format.

**STANDARD DEPARTURE CHART
INSTRUMENT (SID)**

TRANSITION ALT 14 000
TRANSITION LVL FL 140

SEOUL	DEP	123.8	363.8
SEOUL	TWR	126.2	
		236.6	234.5

**SEOUL/Seoul (RKSM)
RWY 19/20
RNAV YEOJU 1**

Note : Departure under U.S TERPS.

OBSTACLE MINIMUM CLIMB RATE TABLE

KNOTS	60	120	180	240	300	TO
V/V(fpm)	500	1 000	1 500	2 000	2 500	5 000

TAKE-OFF MINIMUM :

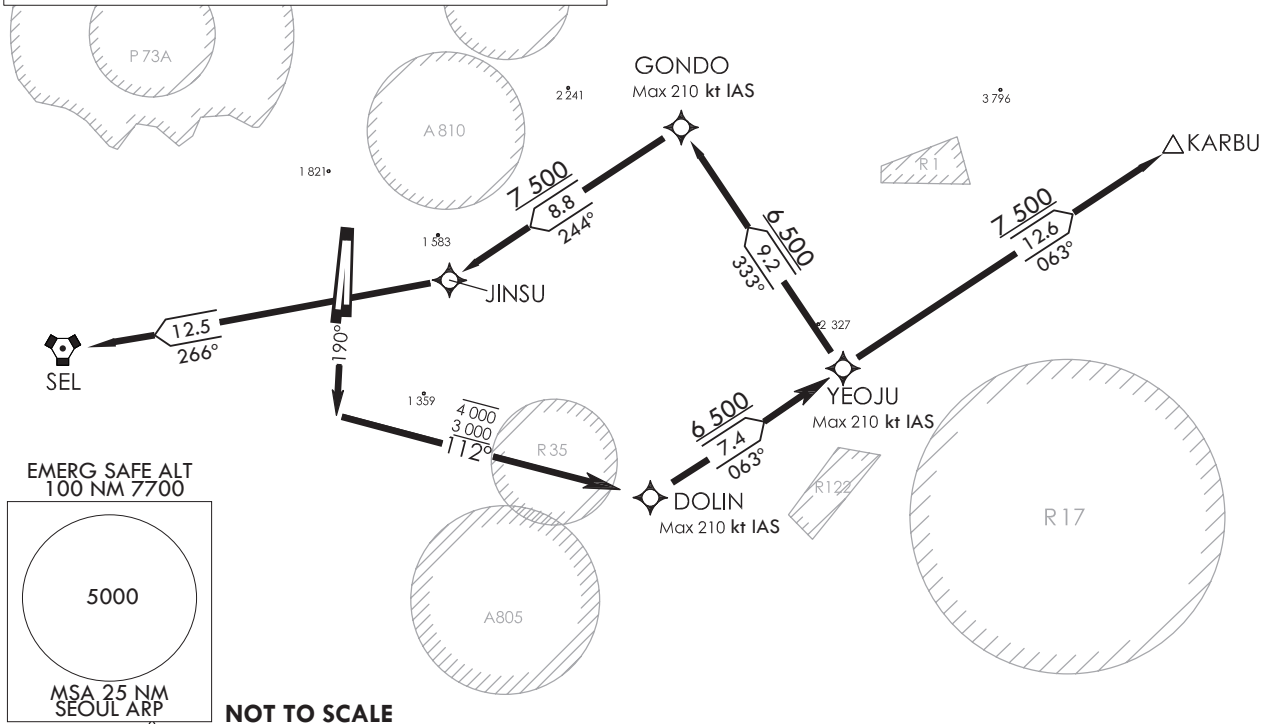
RWY 19/20 : standard with minimum climb of 500 ft/NM to 4 000.

NOTE

1. RNAV 1 Required.
2. DME/DME/IRU N/A.
3. GNSS Required.
4. If unable to accept climb rate, advise ATC on initial contact.
5. Limit DOLIN, YEOJU, GONDO to maximum 210 kt IAS, if unable advise ATC on initial contact.

**ELEV, ALT IN FEET
DIST IN NM
BRG ARE MAG
VAR 8°W**

True North ↑



DEPARTURE PROCEDURE DESCRIPTION

RNAV YEOJU 1 DEPARTURE

TAKE-OFF RUNWAY 19/20 : Climb HDG 190° to intercept course 112 to DOLIN, and left turn, track 063 to YEOJU, THENCE....
.....(transition) maintain 6 500 ft, expect filed altitude 10 minutes after departure.

KARBU TRANSITION : Track 063 to KARBU and climb to assigned altitude.

ANYANG(SEL VORTAC) TRANSITION: Track 333 to GONDO and left turn track 244 to JINSU and right turn track 266 to ANYANG(SEL VORTAC) and climb to assigned altitude.

SEOUL/Seoul (RKSM)
RWY 19/20
RNAV YEOJU 1

AERONAUTICAL DATA TABULATION

Standard Instrument Departure Procedure Coding Tables

RNAV YEOJU 1

Serial Number	Path Descriptor	Waypoint Identifier	Fly -Over	Course/Track ° M(° T)	Distance (NM)	Turn Direction	Altitude (ft)	Speed (kt)	Coordinates	VPA /TCH	Navigation specification	Remarks
001	VI	-	-	Heading 190°	-	-	-	-210	-	-	RNAV1	Bank angle 20°
002	CF	DOLIN	-	112°/104°	-	L	-4 000 +3 000	-210	37°20'33.3"N 127°19'14.5"E	-	RNAV1	Bank angle 20°
003	TF	YEOJU	-	063°/055.1°	7.37	-	+6 500	-210	37°24'46.4"N 127°26'49.9"E	-	RNAV1	Bank angle 20°

Feeder Routes

Serial Number	Path Descriptor	Waypoint Identifier	Fly -Over	Course/Track ° M(° T)	Distance (NM)	Turn Direction	Altitude (ft)	Speed (kt)	Coordinates	VPA /TCH	Navigation specification	Remarks
001	TF	YEOJU	-	-	-	-	+6 500	-210	37°24'46.4"N 127°26'49.9"E	-	RNAV1	Bank angle 20°
002	TF	GONDO	-	333°/325.2°	9.23	L	+6 500	-210	37°32'21.3"N 127°20'12.4"E	-	RNAV1	Bank angle 20°
003	TF	JINSU	-	244°/235.6°	8.82	R	+7 500	-	37°27'21.3"N 127°11'04.2"E	-	RNAV1	
004	TF	SEL	-	266°/258.4°	12.5	-	-	-	37°24'49.0"N 126°55'42.1"E	-	RNAV1	ENROUTE

Feeder Routes

Serial Number	Path Descriptor	Waypoint Identifier	Fly -Over	Course/Track ° M(° T)	Distance (NM)	Turn Direction	Altitude (ft)	Speed (kt)	Coordinates	VPA /TCH	Navigation specification	Remarks
001	TF	YEOJU	-	-	-	-	+6 500	-210	37°24'46.4"N 127°26'49.9"E	-	RNAV1	
002	TF	KARBU	-	063°/055.1°	12.6	R	+7 500	-	37°31'59.0"N 127°39'52.0"E	-	RNAV1	ENROUTE

Change : Amended coordinate format.